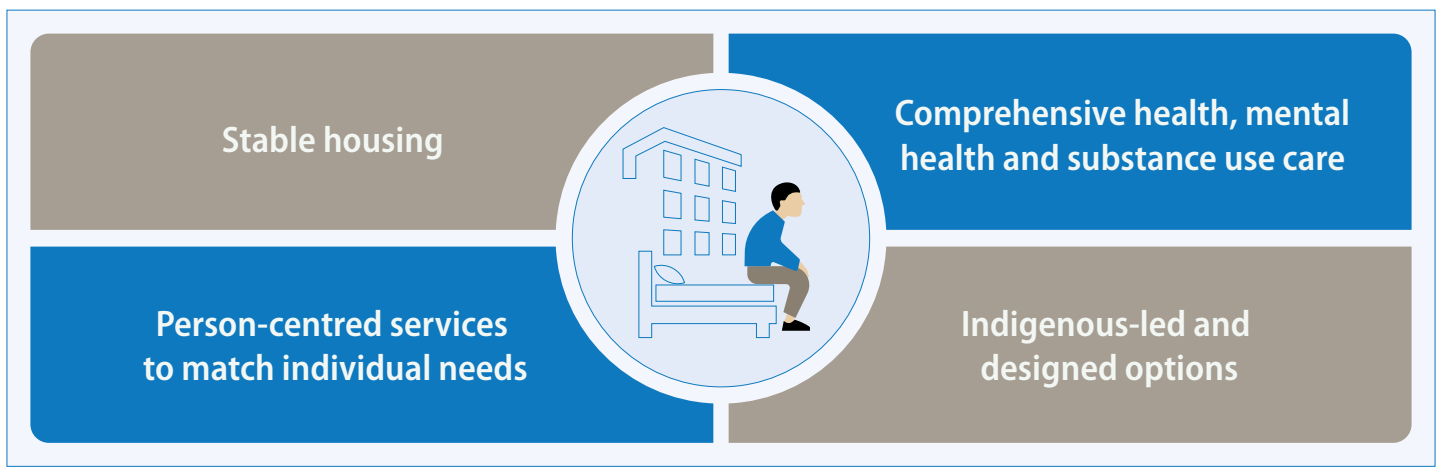


Complex Care HOUSING



Complex care housing is a new program that provides health, mental health and substance use, and other supports in a home environment.



We know that existing housing programs like supportive housing meet the needs of most people who experience homelessness or housing instability. But a growing number of people in our communities require additional health, mental health, social, and other services to help them find and maintain housing. Complex care housing has been created for people at risk of or experiencing homelessness who have complex mental health or substance use issues, and who may also be living with other challenges like acquired brain injury, developmental disability, and histories of trauma.

The intensive services and supports provided through complex care housing will help people with the greatest needs get connected to the housing, care and support they need to thrive.

Services are person-centred. Depending on an individual's needs, services will include things like:



Team-based primary care



Psychiatry



Overdose prevention and education



Counselling






Addictions medicine



Access to Indigenous cultural supports

CCH will use a range of service models to respond to community needs.

		
<p>Distributed</p> <ul style="list-style-type: none"> » Living in multiple supportive housing sites » Supported market rentals » Outreach teams will connect with people where they live 	<p>Multi-unit in supportive housing</p> <ul style="list-style-type: none"> » A dedicated number of units or floor in a larger building » Small, fully dedicated buildings 	<p>Small group homes</p> <ul style="list-style-type: none"> » For people with the highest level of need » Low staff to client ratio

Complex care housing implementation is being led by health authorities and delivered through partnerships with BC Housing, non-profit housing providers, First Nations, Indigenous organizations, and other community partners. People will be able to access complex care housing through multiple referral points, including health authority mental health and substance use services. Health authorities and partners are finalizing access and referral pathways to complex care. If you or someone you know require mental health or substance use services, please contact your local health authority's Mental Health and Substance Use program:

<p>Vancouver Coastal Health</p>	<p>https://www.vch.ca/en/service/mental-health-substance-use-supported-housing-mhsush#wysiwyg--16951</p>
<p>Fraser Health</p>	<p>https://www.fraserhealth.ca/Service-Directory/Services/mental-health-and-substance-use/mental-health---community-services/complex-care-housing</p>
<p>Interior Health</p>	<p>https://www.interiorhealth.ca/sites/default/files/PDFS/complex-care-housing-services.pdf</p>
<p>Island Health</p>	<p>https://www.islandhealth.ca/our-services/mental-health-substance-use-services</p>
<p>Northern Health</p>	<p>https://www.northernhealth.ca/services/mental-health-substance-use</p>
<p>First Nations Health Authority</p>	<p>https://www.fnha.ca/what-we-do/mental-wellness-and-substance-use/mental-health-and-wellness-supports</p>
<p>Provincial Health Services Authority</p>	<p>http://www.phsa.ca/our-services/programs-services/bc-mental-health-substance-use-services</p>

Complex care housing is a program of the Ministry of Mental Health and Addictions and part of the provincial Homelessness Strategy. For more information visit: gov.bc.ca/complexcarehousing.